

# Structural Timber Association

## Fire risk induction pack for site workers

# Welcome and introduction

A presentation to provide you with awareness of fire safety on this this site.



**SITE  
SAFE**

**WHAT YOU NEED TO KNOW**

**SITE  
SAFE**

**SITE RISK MITIGATION**

**SITE  
SAFE**

**YOUR ACTIONS**

# WHAT YOU NEED TO KNOW

1. Fire is a hazard
2. The structure of the building is **Timber Frame**
3. **Timber Frame** is a high risk fire hazard

# The potential for fire to break out

WHAT YOU  
NEED TO  
KNOW

On every construction site there are:

1. Combustible materials
2. Waste piles
3. Processes that create heat and heat can cause combustion of materials

***Be aware of fire as a hazard***

# Your liability; we all have responsibility

## WHAT YOU NEED TO KNOW

1. The risks of fire are being pointed out to you
2. You have a legal obligation to follow or comment on the site fire safety plan
3. You can be legally liable if you endanger lives of those working on the site or people outside the site boundary.

## ***Legal duties from CDM 2015 & Fire safety Regulation***

# SITE RISK MITIGATION

Be aware that this site

1. Has been reviewed for the fire risk
2. There is a fire safety plan which you must comply with (a copy will have been handed to you)
3. The fire safety plan summary will be on fire point boards / notice boards around the site

**SITE  
SAFE**

**SITE RISK  
MITIGATION**

# Site fire safety plan



**NOTE:**  
*replace  
with actual  
plan*



# Fire point boards

**SITE RISK  
MITIGATION**



# Fire point boards continued.../

- Fire **alarm** activation point
- Fire **safety plan** layout.
- Names of **fire safety officer /marshals**
- What you do if a fire occurs
- Location of portable fire extinguishers

**SITE  
SAFE**

**SITE RISK  
MITIGATION**

# Site fire officer / marshal

FIRE OFFICER:	FIRE MARSHAL:
	:

# Temporary fire doors

- Doors noted on the fire safety plan
- **Must** be closed



**DO  
NOT  
LEAVE  
OPEN**

**SITE  
SAFE**

# This site has a tidy policy

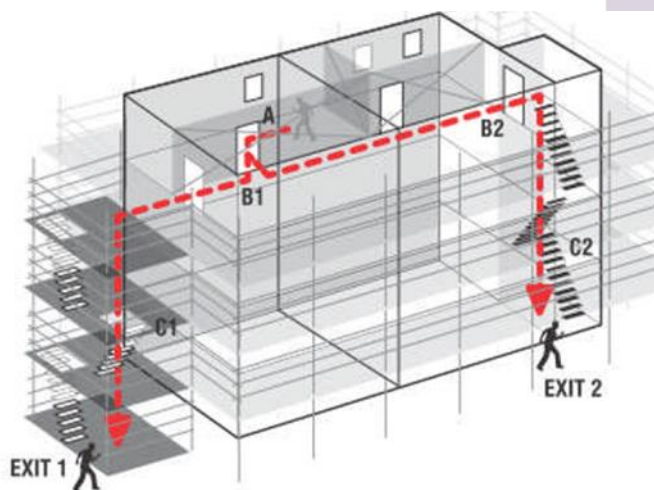
**SITE RISK  
MITIGATION**



## Escape routes

### SITE RISK MITIGATION

- Know where your escape routes are
- keep escape routes clear



Required for all **works that cause heat or sparks**

e.g.:

- Welding / soldering pipes, hot asphalt
- Cutting, diamond drilling



**DANGER- HOT  
WORKS**

**Work Permit  
needed if  
process can not  
be avoided**

# Processes that need work permits

Required for works that cause **a failure in the risk mitigation** e.g.:

- Removing fire stopping / mineral wool in fire robust walls
- Storage of flammable materials
- Moving cameras or alarms
- Changing fire doors /boarded windows







## Action to take if a fire starts

- If you spot it - set off a fire alarm
- Only attempt to extinguish a fire if you are competent and trained to do so
- Evacuate the building by nearest clear escape and go to the muster point
- **Do not** stay to collect your tools

# Support your safety

## YOUR ACTIONS

1. The site fire safety officer / marshals on this site are noted on the fire point boards
2. Any concerns about activities on site should be actioned by your line management
3. If you are concerned that actions are being ignored and you consider it a fire safety issue phone the HSE Complaints team (CAT) on 0300 003 1647



**YOUR  
ACTIONS**

## Report to the site office if:

- Smoking on the site other than designated area
- Fire risk activities without Permits to work
- Escape routes are blocked - or absent
- Waste piles on site beyond normal tiding process
- Concerns about plant and electrical sources



## Five key rules

1. To be familiar **Fire Boards & Fire Safety** plan
2. **Take part** in the fire drills
3. **No smoking** except in designated area.
4. Understand where **work permits** a re needed
5. Tidy site - clear escape routes / no combustible piles

**SITE  
SAFE**

**WHAT YOU NEED TO KNOW**

**SITE  
SAFE**

**SITE RISK MITIGATION**

**SITE  
SAFE**

**YOUR ACTIONS**